

DIVIDE RESORT

*Muskallonge, Pike
and Bass Fishing*

SHOOTING, SAILING, TENNIS, BILLIARDS, BOWLING, ROWING,
CANOEING, YACHTING, TRAP SHOOTING, ETC.



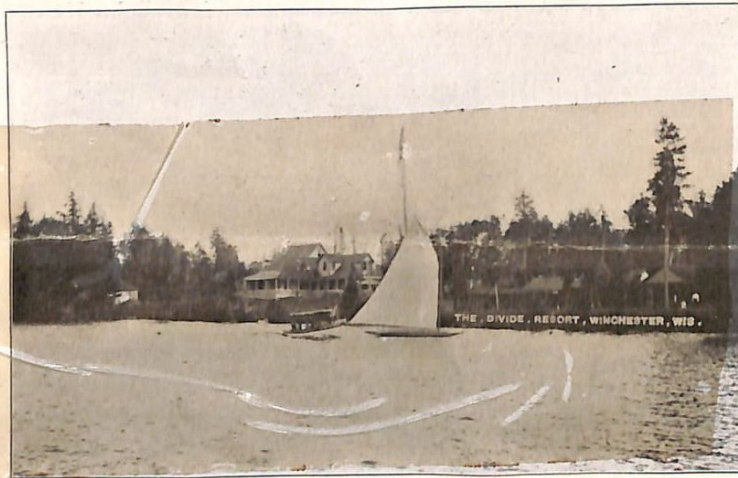
FAYETTE L. BUCK, *Proprietor and Manager*

WINCHESTER, VILAS CO., WIS.
(FORMERLY DIVIDE, WIS.)

DIVIDE RESORT

Is located on the Turtle Waters between North and South Turtle Lakes, on the new branch of the Chicago and Northwestern Railroad, 11 miles from Mercer, Wis.

The Resort consists of Hotel and 15 Cottages, arranged for small and large parties, comfortably furnished, covered screen porches, running water and electric lights. In our new office building we have billiard table and bowling alley, fishing tackle, confectionery, Indian goods and cigars.

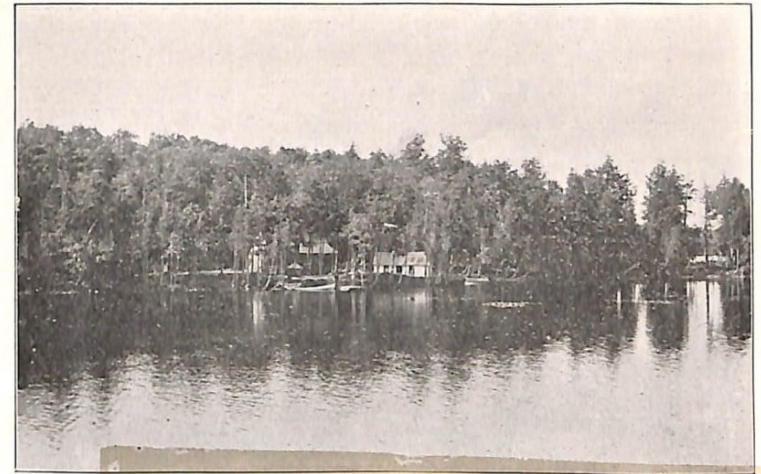


Launch, Sail Boat, Hotel and 5 Cottages at Divide Resort.

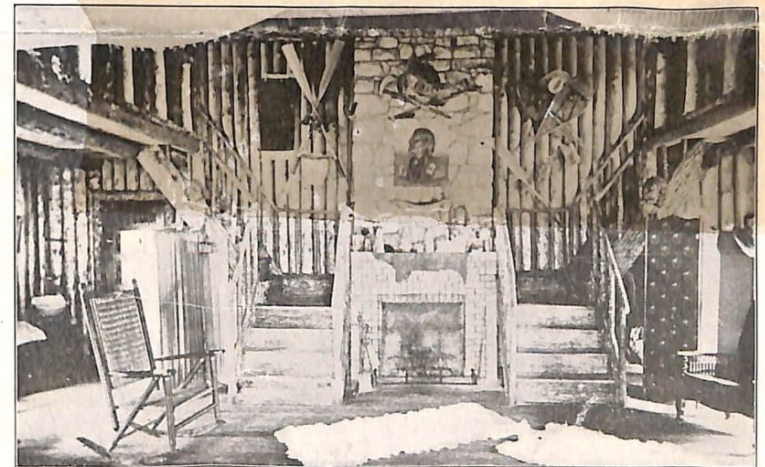
At the Divide Resort you are in reach of 35 beautiful lakes that abound with fish, and are surrounded by 50,000 acres of virgin forests, and on some of the outlying we have Camps located where parties can make side trips away from the Resort, and reach lakes that have been fished but very little.

BRANCH CAMPS

Nomans, George, Harris, Rock and Birch Lakes.



Bay View Cottage, 1100 feet from Hotel, reached by Boat or Trail.



Interior of Bay View Cottage, Divide Resort.

Two story, balcony style, large living room nicely furnished, fireplace, double screen porch, 12x28, electric lighted and running water. This Cottage will be let to parties of 6 or 8 at \$100.00 per week, including Board.

FISH

Our principal fish are Muskallonge, Pike and Bass. We opened up some new Bass Lakes last season that furnishes some great sport.

PLAIN DRESS

We recommend plain dress; no style; dress comfortable and have a good time.



Cabin at Lake George, in a Dense Wilderness, close to 7 fine Fishing Lakes.

HAY FEVER

Hay fever is not known here. Those afflicted have immediate relief.

BOATS

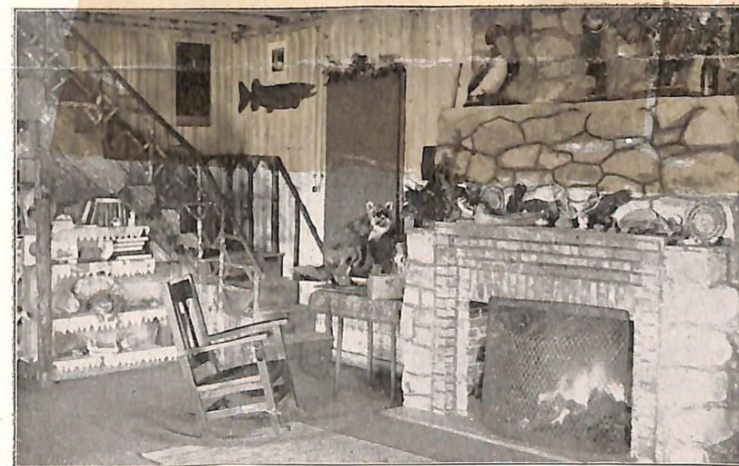
We have a fine line of Boats, Clinker built, furnished with arm chair backs and Cushions. We also keep boats on the outside lakes to avoid portaging.

ATTRACTIONS

Rowing, canoeing, yachting, fishing, shooting, sailing, tennis, billiards, bowling, trap shooting, etc.



Corner of Dining Room, Divide Resort.



Corner of Sitting Room, Divide Resort.

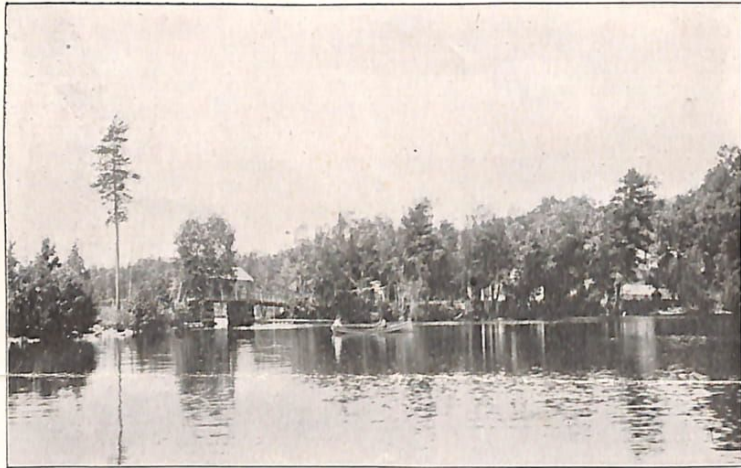
BAIT

We guarantee live bait, which is shipped to us in large quantities once a week.

Number of Guests Accommodated.

Divide Ressor, 75; Lake George Camp, 10; Nomans Camp, 6; Rock Lake Camp, 6; Harris Lake Camp, 6; Birch Lake Camp, 6.

Parties occupying above Camps rates are the same as at Resort.



Rustic Bridge at Divide Resort, between East and West Point.

CLIMATE

Cool and healthful.

TABLE SERVICE

Our table service is first-class. We have our own garden, and will have fresh vegetables during the season, also fresh fruits and cream. We are also raising several hundred young chickens for our tables this season.

1,000 RESORTS

1,000 Resorts in Wisconsin. We challenge them all to show a better equipped outfit, nicer lakes or better fishing.

RATES

One or two persons in cottage, \$2.50 per day, \$14.00 per week, \$45.00 per month. Three or more persons in cottage, \$2.00 per day, \$10.00 per week, \$35.00 per month. Children under 10 years, one-half rate.



Scene on Rock Lake, near Divide Resort.

Boats, \$3.00 per week or \$10.00 per month.

Guide's wages, \$3.25 per day including board.

Bait, 25c per doz.

Parties making reservation of cottages to insure good faith, we expect a small deposit.

RUSTIC BRIDGE

We have built a new rustic bridge between north and south Turtle this season, with open house in center with seats, which is a very desirable spot during the warm weather.

RESORT OPEN

Divide Resort will be open to guests the 25th of May, and will close the 1st. of October. Fishing season for Bass, Pike and Muskallonge, opens June 1st.



Nomans Lake Cabin on Small Island.

TO REACH DIVIDE RESORT

Should you decide to make the Divide Resort a visit, take the C. & N. W. R. R. at Chicago at 5 in the evening, changing cars at Mercer, Wis., and you will be landed within 300 feet of our main building in time for breakfast.

For engagement of cottages and further information, address

FAYETTE L. BUCK

Winchester, Vilas Co. Wis.

Formerly Divide, Wis.